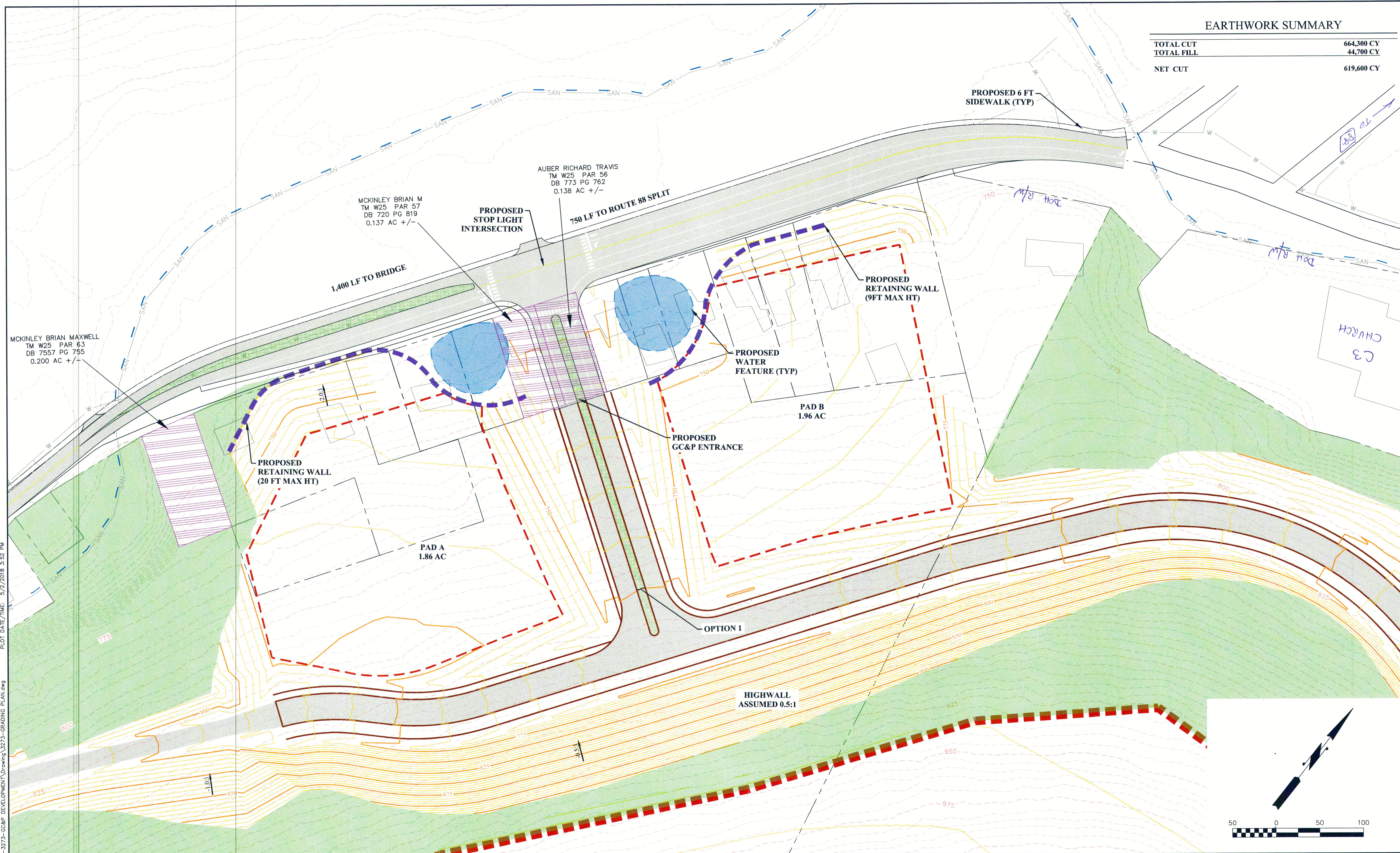


**EARTHWORK SUMMARY**

TOTAL CUT	664,300 CY
TOTAL FILL	44,700 CY
NET CUT	619,600 CY



LAYOUT TAB: PHASE I-OPTION II-801  
 PLOT DATE/TIME: 5/2/2018 3:52 PM  
 CAD FILE: R:\030-3273-GC&P DEVELOPMENT\Drawing\3273-Grading Plan.dwg

THE INFORMATION CONTAINED HEREIN IS THE SOLE PROPERTY OF THE THRASHER GROUP, INC. REPRODUCTION OF THESE DOCUMENTS IN WHOLE OR IN PART, FOR ANY REASON WITHOUT PRIOR WRITTEN PERMISSION, IS STRICTLY PROHIBITED. COPYRIGHT © 2017 THE THRASHER GROUP, INC.

NO.	BY	DATE	DESCRIPTION

SCALE: AS SHOWN
DRAWN: DATE:
CHECKED: DATE:
APPROVED: DATE:
SURVEY DATE:
SURVEY BY:
FIELD BOOK No.:

**THRASHER**  
 THE THRASHER GROUP, INC.  
 600 WHITE OAKS BLVD, BRIDGEPORT, WV 26330  
 PHONE (304) 624-4108  
 FAX (304) 624-7831

PHASE No.
CONTRACT No.
PROJECT No.
<b>1-01-030-0000</b>

**GC&P DEVELOPMENT  
 COUNTY ROUTE 88  
 WHEELING, OHIO COUNTY, WV  
 PHASE I-OPTION II**

SHEET No. **EX 22**